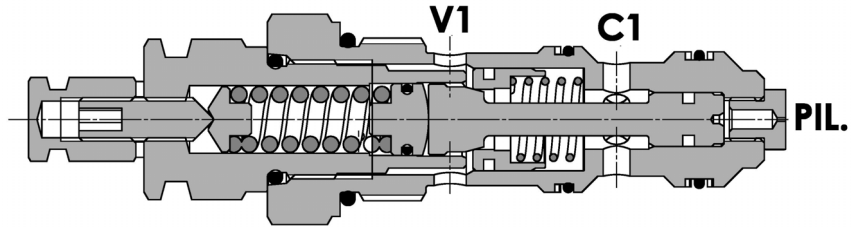
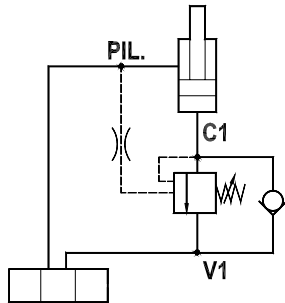




**Valvola overcenter, versione a cartuccia, cavità 1 3/16"-12 unf**  
**Overcenter valve, cartridge version, cavity 1 3/16"-12 unf**

Rev.03-2010/09

**SPECIFICHE TECNICHE**

**Materiali:** corpo in acciaio, protetto mediante zincatura. I componenti interni sono in acciaio trattato termicamente.

**Portata:** 90 l/min

**Taratura max.:** 350 bar

**Regolazione pressione:** mediante vite

**Campo di regolazione pressione:** vedere pag. 02

**TECHNICAL SPECIFICATIONS**

**Materials:** body is steel made. Internal parts are in hardened steel.  
 External surface: zinc plated.

**Rated flow:** up to 90 l/min

**Max. setting:** 350 bar

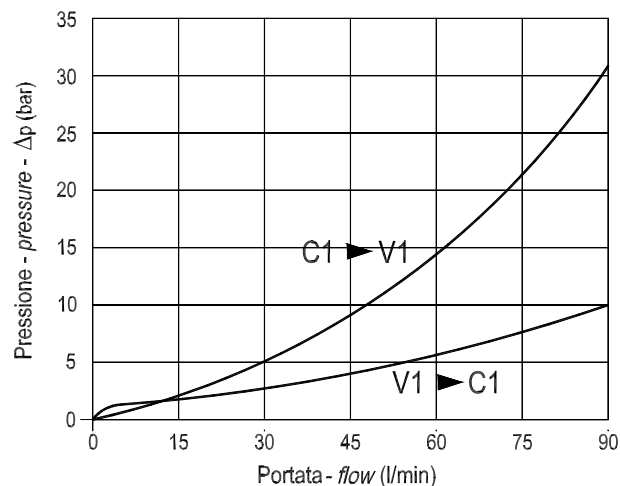
**Adjustment means:** leakproof screw adjustment

**Adjustable pressure range:** see page

**DIAGRAMMA PERDITE DI CARICO - PRESSURE DROP CURVES**

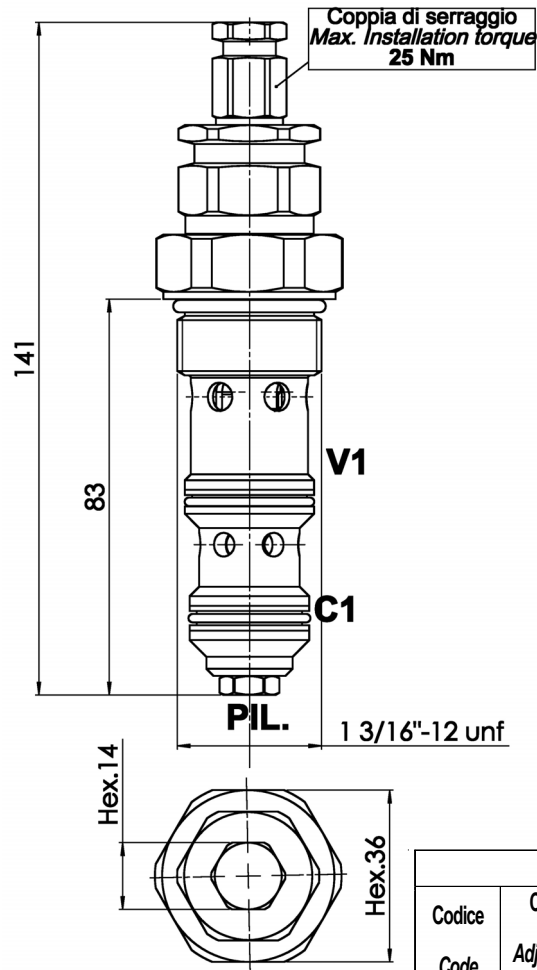
Viscosità olio 24 mm<sup>2</sup>/sec. (3,5 °E)  
 Temperatura 50 °C

Oil viscosity 24 mm<sup>2</sup>/sec. (3,5 °E)  
 Temperature 50 °C



**Valvola overcenter, versione a cartuccia, cavità 1 3/16"-12 unf**  
**Overcenter valve, cartridge version, cavity 1 3/16"-12 unf**

Rev.03-2010/09



MOLLE - SPRINGS			*
Codice Code	Campo taratura min.-max. bar Adjustable pressure range bar	Increment. press. bar/giro vite Pressure increase bar/turn	Taratura standard bar Standard setting bar
35	100 - 350	109	280

TIPO TYPE	RAPP. DI PILOTAGGIO PILOT RATIO	CAVITA' CAVITY	COPPIA DI SERRAGGIO INSTALLATION TORQUE	PESO WEIGHT
			Nm	Kg
FPO 90 C	1 : 4.2	33141	90 - 100	0.500

**ESEMPIO DI ORDINAZIONE - ORDERING CODE EXAMPLE**

**F P O 9 0 C 3 5**